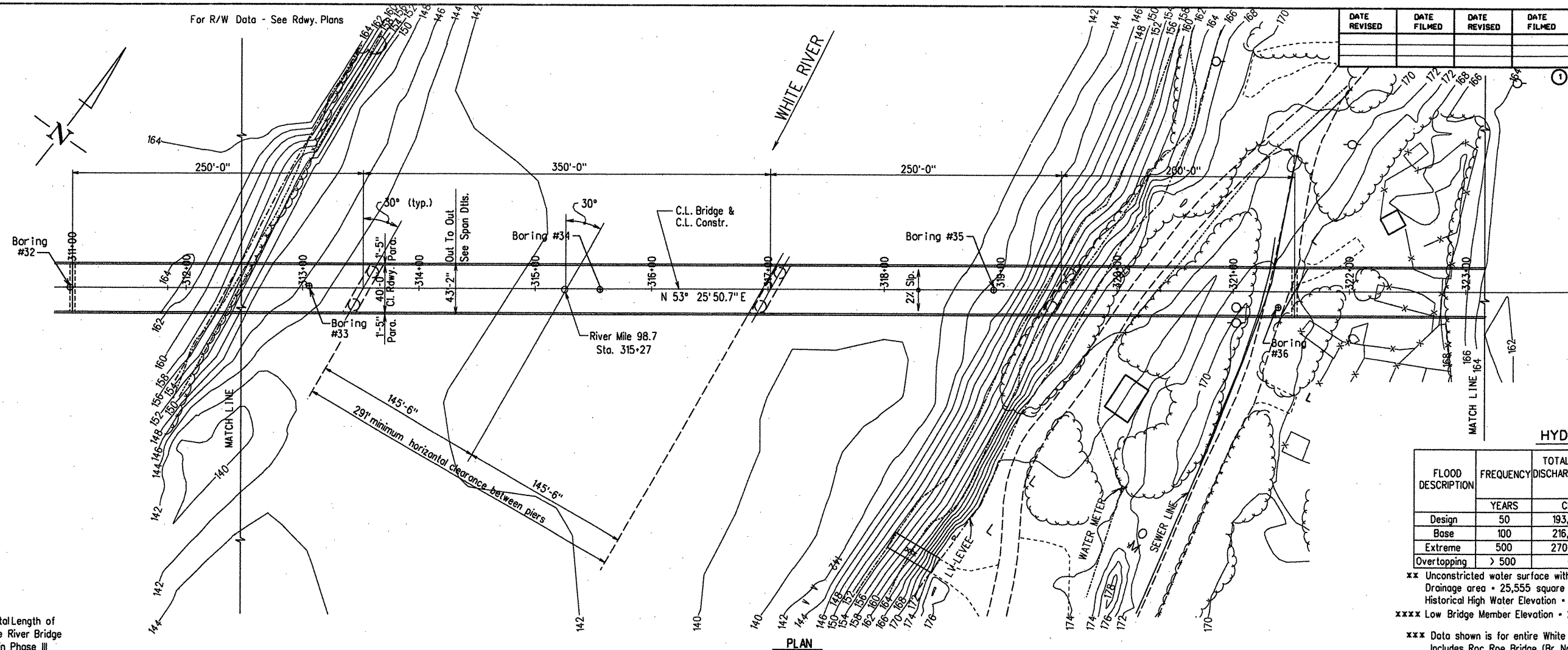


For R/W Data - See Rdwy. Plans

DATE REVISED	DATE FILMED	DATE REVISED	DATE FILMED	FED. ROAD DIST. NO.	STATE	FED. AID PROJ. NO.	SHEET NO.	TOTAL SHEETS
				6	ARK.			
				JOB NO.		110395	22	203
				06830		LAYOUT	47020	



HYDRAULIC DATA

FLOOD DESCRIPTION	FREQUENCY YEARS	TOTAL DISCHARGE ***	DISCHARGE THRU BRIDGE	**NATURAL WATER SURFACE ELEVATION	WATER SURFACE ELEV. WITH BACKWATER
		CFS	CFS	FEET	FEET
Design	50	193,000	139,000	174.0	174.9
Base	100	216,000	155,600	175.5	176.0
Extreme	500	270,300	194,600	177.4	177.7
Overtopping	> 500	-	-	-	-

** Unconstricted water surface without structure or roadway approaches.
 Drainage area = 25,555 square miles.
 Historical High Water Elevation = 174.9 (1973)
 **** Low Bridge Member Elevation = 223.6
 *** Data shown is for entire White River Floodplain.
 Includes Roc Roe Bridge (Br. No. 06829), White River Relief Bridge (Br. No. 07027), & White River Bridge (Br. No. 06830)

Total Length of White River Bridge in Phase III = 6955' - 1/4"

Phase II (Not in this Contract)

Total Length of Bridge (Ph. II & III) = 9468' - 3 7/8"

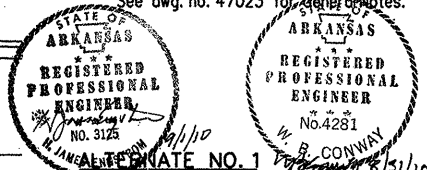
1050'-0" Continuous Composite Plate Girder Unit (250', 350', 250', 200')
 (Not in this Contract)

V.C. Length = 2000' PVI 317+16.98
 Elev 250.08
 G1 2.50% G2 -3.00%

* Top of Deck at C.L. Bridge and C.L. Bent to Low End of Cap

Strip Seal Joints are designated as "X" Strip Seal Joints where "X" represents the "A" dimension at 60 degrees F as shown in the table on dwg. no. 47095 - 47099.

Note: See dwgs. no. 47024 - 47028 for Soil Borings & additional data.
 See dwg. no. 47023 for General Notes.



STATE OF ARKANSAS
 REGISTERED PROFESSIONAL ENGINEER
 H. JAMES ENGSTROM & ASSOC., INC.
 No. 164
 W. B. CONWAY
 No. 4281
 LICENSE NO. 1
 DATE 8/31/10
 DATE 8/31/10
 OUT OF BRIDGE OVER WHITE RIVER
 (SHEET 9 OF 9)
 WHITE RIVER STR. & APPRS.
 (CLARENDON) (PH. III) (F)
 MONROE COUNTY
 ROUTE 79 SEC. 13
 ARKANSAS STATE HIGHWAY COMMISSION
 LITTLE ROCK, ARK.

Engstrom / Modjeski and Masters

DRAWN BY: LKD/TAD DATE: Sep. 10 FILENAME: b1103951_109.dgn
 CHECKED BY: FS DATE: Sep. 10 SCALE: 1" = 50'-0"
 DESIGNED BY: YO DATE: Sep. 10
 BRIDGE NO. 06830 DRAWING NO. 47020

